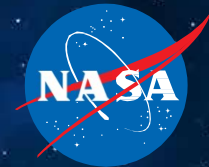




National Aeronautics and Space Administration



Marshall Space Flight Center **OFFICE OF CENTER OPERATIONS**

Evolving for the future
to provide the infrastructure
in support of NASA's missions

Marshall Space Flight Center
OFFICE OF CENTER OPERATIONS

MISSION

Enabling Mission Success by providing
the best possible services to meet our
customer needs

VISION

To provide operational services
that exceed customer
expectations

OFFICE OF CENTER OPERATIONS

The Office of Center Operations' mission is to efficiently and effectively support Center missions by providing institutional services that include...

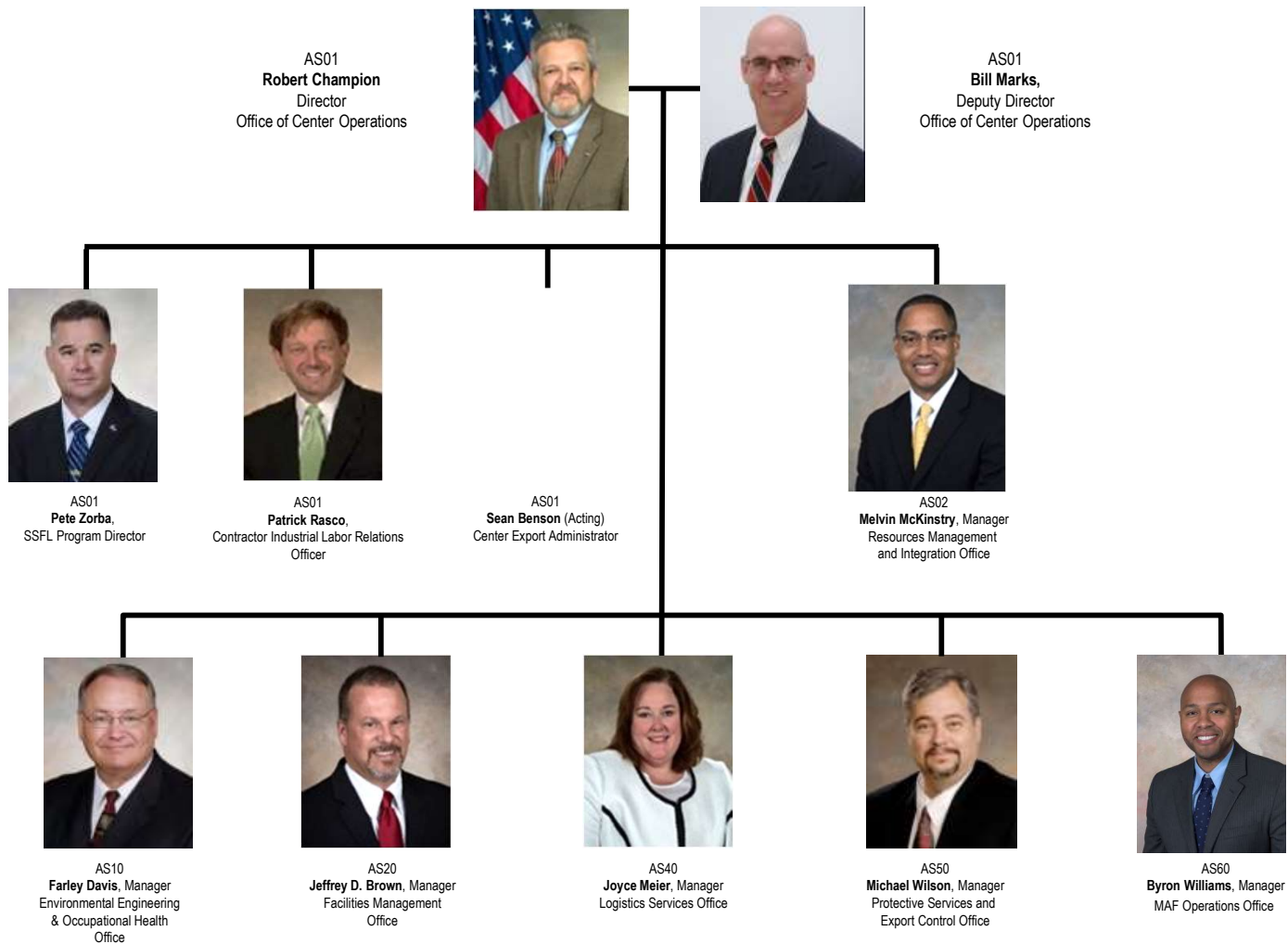
- Design, operation, and maintenance of MSFC facilities
- Environmental management and occupational health
- Movement of institutional and program support equipment
- Logistics support services
- Industrial labor relations
- Army/NASA coordinated services
- Protective services and export control for personnel, property, and programs
- Michoud Assembly Facility (MAF) Operations.



Marshall Space Flight Center

OFFICE OF CENTER OPERATIONS

MSFC Office of Center Operations





MSFC OFFICE OF CENTER OPERATIONS

Industrial Labor Relations

Industrial Labor Relations

- As defined by the National Labor Relations Act
- To maintain sound relations with business, industry, and organized labor to:
 - Ensure prompt receipt of information involving labor issues that could adversely impact NASA acquisitions.
 - Ensure NASA obtains critical support, supplies, and services without interruption.
 - Seek voluntary agreement between management and labor to utilize “interest-based bargaining” and Alternate Dispute Resolution mediation in lieu of arbitration and litigation.

Federal Contract Labor Standards

- Ensure Center adherence and compliance with Federal Labor Standards/Statutes
 - Davis-Bacon Act: Wage Determinations
 - Service Contract Act: Wage Determinations
 - Copeland (Antikickback) Act
 - Walsh-Healey Act
 - Fair Labor Standards Act
 - Contract Work Hours and Safety Standards Act
- Labor Standards Violations
- Fraud, Waste, and Abuse of Critical Government Resources
- Preventive Enforcement
- Education and Training
- Compliance Assistance
- Procurement/SEB Support





Resources Management & Integration

Budget Management & Integration

- Center Management & Operations (CMO), Construction of Facilities (CoF), Environmental Compliance and Remediation (ECR), Corporate Security, Direct Projects, and Reimbursables
- Labor, Travel, and Procurements
- Monthly Reviews (Plans vs. Actuals)
- PPBE (Long Range Budget Planning)
- Workforce (Civil Service and Contractors)

Center Operations Working Group

- Schedules
- Risk
- Directives
- Actions
- Secretariat

Directives and Agreements

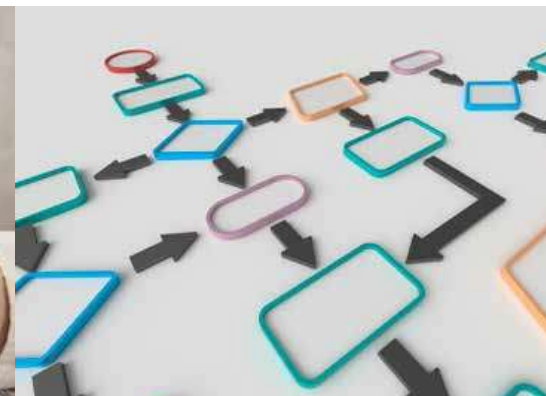
- NPD, NPR
- MDP, MPR, MWI
- Multi Program/Project
- ARMY/NASA Support Agreement
- Respiratory Protection
- OI/OWI
- Space Acts
- MOUs
- Memorandums

Audits/Assessment

- External Audits (ISO)
- Internal Audits
- NCRs/Alerts/Calibration/RCARS

Management Process Support

- QMS Representative
- Directive Control Board
- Infrastructure Management Committee Support
- Web Page Support





MSFC OFFICE OF CENTER OPERATIONS

Environmental Engineering & Occupational Health

Industrial Hygiene Services

- Asbestos monitoring & analysis
- Chemical exposure monitoring
- Lead monitoring
- Ergonomic evaluations
- Confined space permitting
- Noise monitoring
- Material safety data sheets
- Cafeteria inspections
- Indoor air quality monitoring
- Complaint investigations
- Heat stress monitoring
- Training
- Annual building inspections

Environmental Compliance

- Hazardous waste
- Chemical
- Wastewater/storm water
- Environmental assessments
- Air emissions
- Environmental training
- Audits/inspections
- Green procurement
- Natural & cultural resources
- Toxic substances
- Recycling

Radiation Safety

- Ionizing radiation surveys
- Non-ionizing radiation surveys (lasers, RF microwave)
- Training

Medical Center

- Monitoring exams
- Immunizations/vaccinations
- Emergency & therapeutic medicine
- Education

Respiratory Protection

- Respiratory protection equipment
- Fit testing
- Training
- Army support

Agency Responsibilities

- Manage regulatory risk and analysis communication. Support environmental managers panel.

Restoration/Cleanups





MSFC OFFICE OF CENTER OPERATIONS

Facilities Management

Facilities Planning

- Real Property
- Roads and Parking
- Geographical Information System (GIS)
- Signage
- Master Planning
- Historical/Cultural
- Space Management
- Americans with Disabilities Act
- Army Coordination
- Leases
- Enhanced Use Lease
- Memoranda of Agreement
- Space Act Agreements

Facilities Engineering

- Configuration Control
- Demolition
- Engineering Analysis
- Architectural/Engineering Services
- Project Integration
- Cost Engineering
- Project Planning
- Project Scheduling
- Project Management
- Construction
- Design
- Facilities Utilization Review Committee (FURC)

Sustaining Facilities

- Energy and Utility Management
- Systems (HVAC) Availability
- Custodial
- Grounds/Landscaping
- Equipment Operations
- Outage Coordination
- Utility Control System and Building Automation
- Unscheduled Maintenance
- Scheduled Maintenance
- Operations De-ionized, Chilled Water, Steam, etc.





MSFC OFFICE OF CENTER OPERATIONS

Logistics Services

Property Management

- Excess Property
- GSA Sales
- Donations
- Demilitarization
- Recycling/Scrap
- Reutilization
- Government and Contractor Held Material and Assets
- Property Control
- Inventory Auditing
- Warehousing

Transportation

- Fleet Management
- Motor Pool and Equipment Maintenance

Retail Store

- JIT Office Supplies Ordering and Delivery
- All Furniture Sales (Including Ergonomic Furniture)
- Safety Supplies

Moves/Food/Furniture Distribution

- Moves
 - Personal Property
 - Special Events
- Furniture
 - Ordering
 - Maintenance
 - Distribution
 - Reutilization
- Property Relocation

Program/Project Support

- Marine Operations
- Program Critical Hardware Movement Support
- Maintenance and Repair of Research, Development, Test, and Evaluation Equipment
- Flight Hardware Support

Shipping/Receiving/Mail

- U.S. Postal Service Mail
- Interoffice Mail
- Receive and Inspection of Packages
- Freight Shipment
- Custom Packaging and Crating





MSFC OFFICE OF CENTER OPERATIONS

Protective Services & Export Control

Agency

- Export Control
 - Compliance
 - Training
 - Audits/inspections
 - Center Export Representative
 - Oversight
- Technology Protection
 - Lifecycle Security Risk Management
 - Threats/Vulnerability Assessments
 - Cyber Threats
 - Computer Forensics Analysis

Center

- Personnel Security
 - Suitability Investigations
 - Case Adjudications
- Investigations
 - Crime Prevention and Investigations
 - Missing Property/Asset Recovery
 - Threat Assessment Advisory Group
 - Security Services
- Security Awareness
 - Mission Essential Infrastructure
 - Security Systems Integration
 - Identity and Assessment Management

Emergency Management and Operations

- People
 - Life Safety
 - 24x7 Rapid Security Response
 - 911 Center Management
- Events
 - National Incident Management System (NIMS) Incident Command
 - MSFC Emergency Operations Center
 - Mass Notifications
- Planning
 - Emergency Policies/Plans
 - Continuity of Operations
 - Fire Prevention





MSFC OFFICE OF CENTER OPERATIONS

Michoud Assembly Facility (MAF) Operations

Facility Operation & Maintenance Management

- Facility Projects oversight CoF/A&E Planning and Implementation
- Floor Plan Layout
- Port/Harbor
- Emergency Management Program
- Office Space Coordination

Site Services

- Trash, Vending, Cafeteria
- Security

Health & Welfare Management

- Medical Operation
- Bloodborne Pathogens

Logistic

- Shipping/Receiving
- Transportation
- Property Management/Tracking

Environmental Management

- Remediation
- Permitting

Marshall Management System (MMS) Change Support

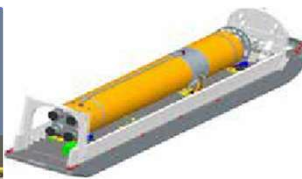
- New Directives
- Update Directives



MSFC OFFICE OF CENTER OPERATIONS

Evolving for the Future

Our primary function is to provide infrastructure to support NASA Missions.



Space Launch System (SLS)



James Webb Telescope



International Space Station

Must become institutionally more cost competitive

- Implementation of 20-year Facilities Master Plan
 - Baselined in 2003
 - Renewed in 5 year cycles
 - The main tenet of the Master Plan is to support Agency goals
- Institutional focus is “Right-sizing” of MSFC facilities
 - Inactive/Abandon
 - Eliminate/Transfer
 - Refurbish/Replace



Elimination & Revitalization Through Replacement

Eliminate what is no longer needed

- 20% reduction of existing buildings/structures footprint completed as of 2022; by 2032 we will have reduced our footprint by 27%

Modernize aging facilities Center wide

- Replace older buildings with Green facilities
 - 65% reduction in operations & maintenance costs
 - 35% reduction in energy costs
- Green Buildings at MSFC:
 - Nine LEED Certified buildings, with two Green Globe Certified buildings
 - Future buildings, including Marshall Exploration Facility, will be designed to a minimum of Two Green Globes or LEED Silver



Building 4220
FY 2014



Building 4260
FY 2016



Building 4221
FY 2018



Building 4222 (MEF)
FY 2026



4201 Demolition



4200 Demolition

MSFC OFFICE OF CENTER OPERATIONS

Contracts

Title	Vendor	Services	Current POP & Value
Facilities Operations & Maintenance Support Services (FOMSS)	AECOM Corp.	Facility Operations & Maintenance	7/1/17 - 6/30/23 \$319,482,346
Marshall Logistics Support Services (MLSS)	L&M Technologies, Inc.	Logistics Support Services & Management	9/1/18 - 8/31/23 \$89,162,606
Facility Engineering Design & Inspection Services (FEDIS I)	Accura-Rosser JV	Architectural & Engineering Design Services	4/1/17 - 3/31/23 \$43,504,008
A/E Services for Environmental & Occupational Health at MSFC	CH2M Hill (Jacobs)	Architectural & Engineering Services	10/1/19 - 9/30/23 \$40,000,000
MSFC & MAF Protective Services	Chenega Global Protection, LLC	Physical & Protective Services	12/1/21 - 9/30/23 \$22,500,000
Custodial & Refuse Collection Services (CRCS II)	All Native Synergies	Custodial & Refuse Collection	8/23/19 -8/21/23 \$19,651,344
Occupational Health Services	InoMedic Health Applications, Inc.	Occupational Health Services	10/1/19 - 9/30/23 \$11,701,962
Center Operations Building Automation (COBA)	Lin Tech Global	Monitors UCS Console Operations	4/1/20 -3/31/23 \$5,572,159
Multiple Award Construction (MACC-II)	24 Contractors (multiple award)	General Construction, Repair, Demolition	10/25/17 - 10/25/25 \$3,000,000,000
Multiple Award (IDIQ) Minor Construction (MCC-IV)	20 Contractors (multiple award)	General Construction (IDIQ TOs \$1M or less)	3/25/19 - 3/24/24 \$20,000,000 (each)
Environmental Engineering Services at MSFC & MAF	KS Ware & Associates, LLC	Environmental Engineering Services (IDIQ)	4/3/17 - 10/2/22* \$27,496,000 *TOs ongoing until complete

Contracts

MSFC OFFICE OF CENTER OPERATIONS

Points of Contact



Contractor Industrial Labor Relations Officer

Patrick Rasco

patrick.rasco@nasa.gov



Resources Management & Integration Office

Melvin McKinstry

melvin.d.mckinstry@nasa.gov



Environmental Office

Farley Davis

farley.davis@nasa.gov



Facilities Office

Jeff Brown

jeffrey.brown@nasa.gov



Logistics Office

Joyce Meier

joyce.w.meier@nasa.gov



Protective Services & Export Control

Mike Wilson

michael.wilson@nasa.gov



MAF Operations

Byron Williams

byron.l.williams@nasa.gov



NASA'S JOURNEY TO MARS