

UNCLASSIFIED



# Army Materiel Command Update

20 Jun 19

MR. Jesse Barber  
Command Ombudsman



# AGENDA

- **AMC High Level Command Changes**
- **RDECOM**
- **AMC Structure**
- **Path Forward**
- **Questions**





# AMC High Level Changes

- **Changes & Realignment**

- **GAIN:**

- U.S. Army Medical Research and Materiel Command (MRMC)
      - U.S. Army Medical Logistics Command (AMLC)
    - U.S. Army Installation Management Command (IMCOM)

- **LOSS:**

- U.S. Army Research, Development, and Engineering Command (RDECOM)
      - U.S. Army Combat Capabilities Development Command (CCDC)
    - MRMC- U.S. Army Medical Research Development Command (MRDC -RDA)

- **LOGSA name change to Logistics Data Analysis Center (LDAC)**

- **No Change to Depots, Arsenals, and Ammunition Plants**





# What happened to RDECOM

- RDECOM is now the U.S. Army Combat Capabilities Development Command (CCDC)
- CCDC provides the Army with an organic research and development capability. The fundamental characteristic of the CCDC workforce is the focus on the Soldier.
- CCDC is a major subordinate command of the U.S. Army Futures Command, which assesses and integrates the future operational environment, emerging threats, and technologies to develop and deliver concepts, requirements, future force designs and the delivery of modernization solutions.
- CCDC is comprised of eight major competency areas, including the:
  - CCDC Armaments Center formerly ARDEC
  - CCDC Aviation & Missile Center formerly AMRDEC
  - CCDC Army Research Laboratory formerly ARL
  - CCDC Chemical Biological Center
  - CCDC C5ISR Center CERDEC
  - CCDC Data & Analysis Center
  - CCDC Ground Vehicle Systems Center formerly TARDEC
  - CCDC Soldier Center
- CCDC also has three regionally aligned international elements, the CCDC-Americas, -Atlantic and -Pacific centers.
- The command focuses on fundamental scientific research, technology development, engineering and analysis to support the Army's six modernization priorities: Long-Range Precision Fires; Next-Generation Combat Vehicle; Future Vertical Lift; Network; Air & Missile Defense; and Soldier Lethality. Key tenets of the CCDC mission are speed of delivery and integrating technology into existing weapon systems.
- Formerly known as the U.S. Army Research, Development and Engineering Command (RDECOM), CCDC joined AFC on Feb. 3, 2019, and marks the next step in the Army's effort to transform its approach to modernize critical core capabilities that will give Soldiers and allies a decisive edge in battle. As the modernization strategy focuses on delivering capabilities to support Multi-Domain Operations by 2028, CCDC will maintain a balance between scientific research to support MDO and technology that may not be developed until 2050 or beyond.



# Army Materiel Command Structure 4 Feb 19



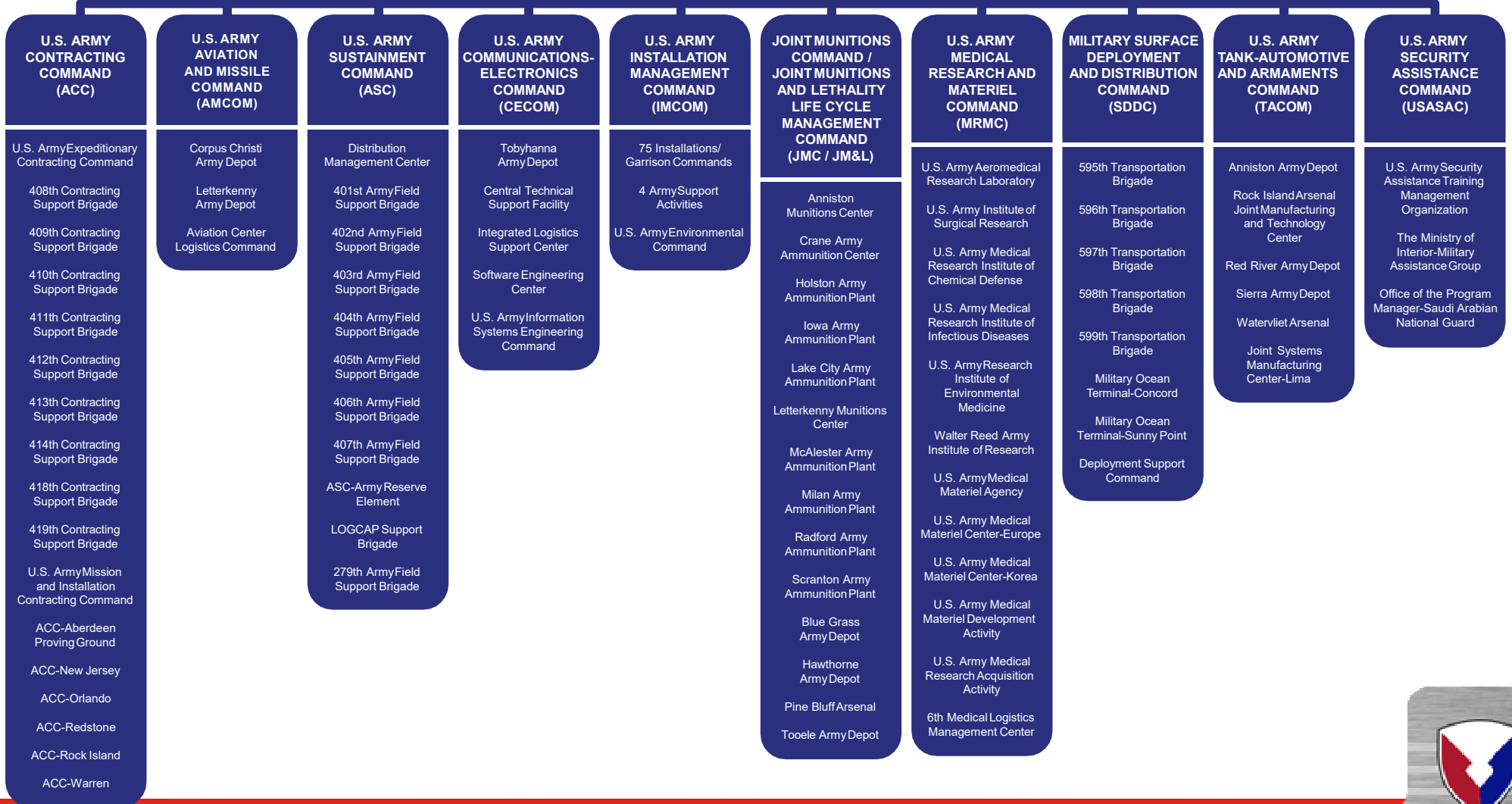
U.S. ARMY

## U.S. ARMY MATERIEL COMMAND (AMC)

Redstone Arsenal, AL

U.S. ARMY CHEMICAL  
MATERIALS ACTIVITY  
(CMA)

U.S. ARMY LOGISTICS  
DATA ANALYSIS CENTER  
(LDAC)



# Army Materiel Command Structure Today



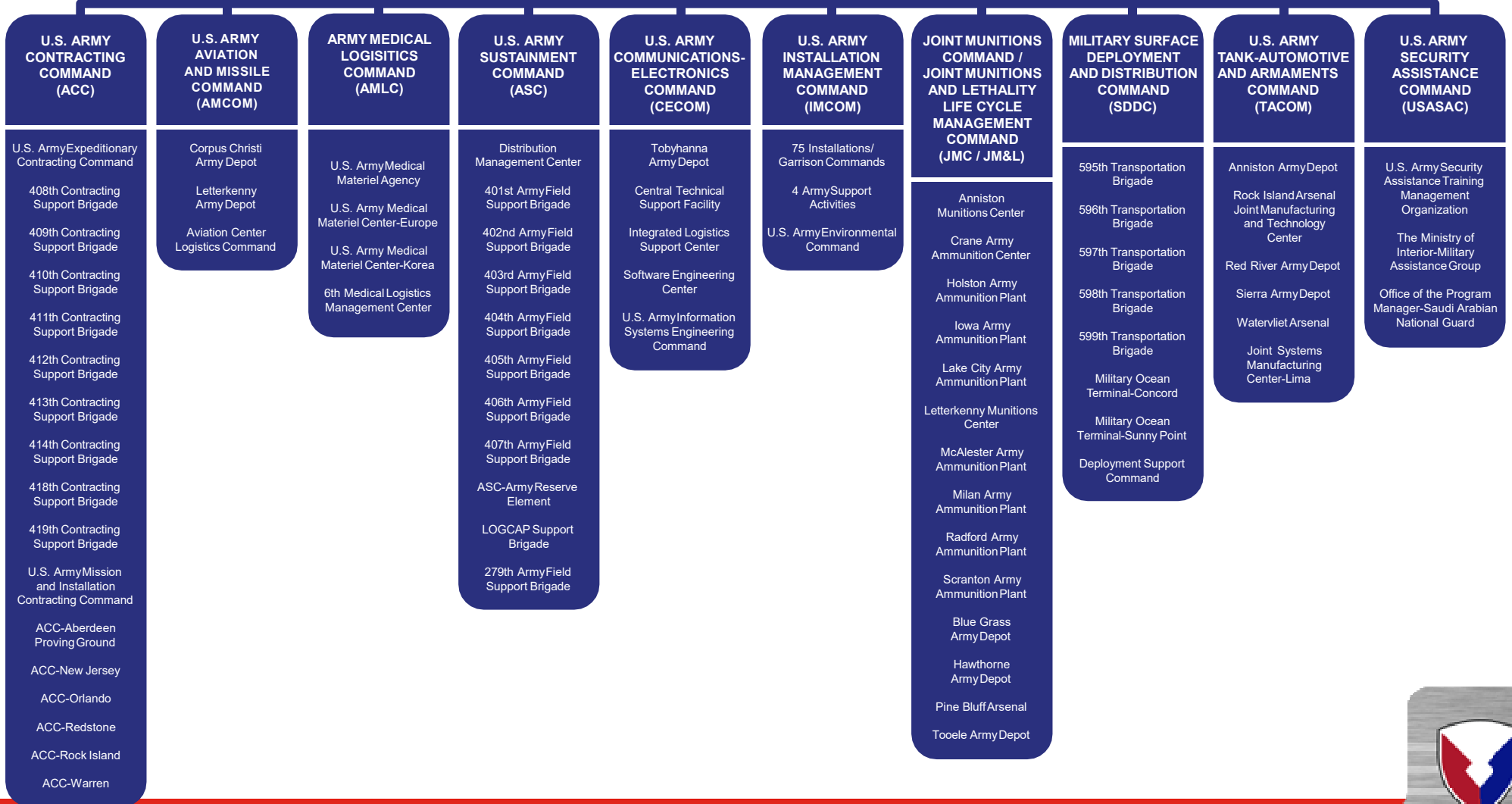
U.S. ARMY

## U.S. ARMY MATERIEL COMMAND (AMC)

Redstone Arsenal, AL

U.S. ARMY CHEMICAL MATERIAL ACTIVITY (CMA)

U.S. ARMY LOGISTICS DATA ANALYSIS CENTER (LDAC)





# Path Forward

- **Army Futures Command Support**
- **Sustain Warfighter Current Capability**
- **Partner with Industry for Solutions**





U.S. ARMY

# Questions

